

Vulnerable Youth

Metropolitan Youth Health (MYH)

A free and confidential health service for vulnerable young people aged 12–25 years. MYH recognises the unique vulnerabilities that youth have including child abuse, sexual assault and other forms of interpersonal violence.

Services include:

- › Assessment and management of general/physical health issues
- › Aboriginal youth health screening programs
- › Antenatal and post-natal care
- › Therapeutic care coordination of health issues
- › Counselling and one-on-one support services
- › Group programs
- › Young parenting programs
- › Health care for young people in the Adelaide Youth Training Centre

For further information or to make an appointment please call (office hours):

Angle Park, Westwood Health

Centre Unit 1, 40-44 Trafford Street Tel: 8243 5637

Christies Beach, 50a Beach Road Tel: 8326 6053

Elizabeth, 6 Gillingham Road Tel: 8255 3477

Intensive Therapeutic Care Programs for Youth

Yarrow Place provides an intensive therapeutic care program for young people 12+ who are currently or were under Guardianship of the Chief Executive and who are absconding from placement and are being or are at risk of being sexually exploited.

Yarrow Place in partnership with Metropolitan Youth Health provide My Place, an intensive therapeutic health care program for young people aged 12 - 25 years who are or were under Guardianship of the Chief Executive, and who are at risk of having a child removed into the care system. For more information call: Yarrow Place on 1800 817 421

Additional Support

1800 RESPECT

(National sexual assault, DFV counselling service)

Tel: 1800 RESPECT / 1800 737 732 (freecall 24 hours)

www.1800respect.org.au

Domestic Violence Crisis Line

Tel: 1800 800 098 (freecall 24 hours)

www.womenssafetyservices.com.au

Aboriginal Services (Family Violence)

Nunga Mi:Minar – Tel: 8367 6474

Ninko Kurtangga Patpangga –Tel: 8297 9644

Childrens Services

CAMHS Connect – Tel:1300 222 647

Child & Family Health Centres (CAFHS)

– Tel: 8303 1522

Homelessness Gateway Service

Tel: 1800 003 308 (freecall 24 hours)

Police Assistance

Tel: 131 444 (freecall 24 hours)

Emergency Tel: 000

www.sahealth.sa.gov.au

For more information

Youth and Women's Safety Wellbeing Division

Women's and Children's Health Network

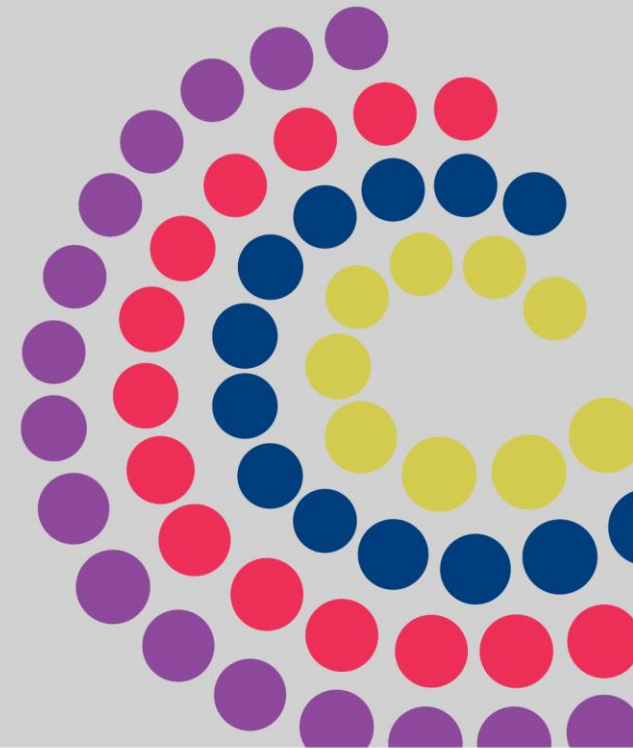
Telephone (08) 8239 9618



www.ausgoal.gov.au/creative-commons

© Department of Health and Wellbeing,
Government of South Australia. All rights reserved.

Youth and Women's Safety Wellbeing Division (YWSWD)



Government of South Australia

Women's and Children's
Health Network

Youth and Women's Safety Wellbeing Division (YWSWD)

YWSWD is a division of the Women's and Children's Health Network (WCHN) and is dedicated to supporting the safety and wellbeing of people who have health consequences as a result of interpersonal violence.

YWSWD acknowledges and seeks to address:

- › the impact of violence on people's safety and wellbeing
- › the history of injustice towards Aboriginal people and the ongoing impact on their safety and wellbeing

YWSWD staff are trauma specialists who are kind, caring, professional, culturally respectful and demonstrate a positive work ethic.

YWSWD staff are committed to sharing their knowledge and skills through direct service delivery, training and education of others.

YWSWD believes:

- › everyone has a right to feel safe/respected and victims are never to blame
- › it is important to partner with consumers in their health care
- › that people can and do recover from trauma.

Women's Safety Strategy (WSS)

WSS supports SA Health in the implementation of healthcare responses to Domestic and Family Violence (DFV) and Sexual Assault. WSS offers training, consultation and capacity building to professional groups to enhance their response to domestic and family violence.

For further information email:
EnquiriesWomen'sSafetyStrategyWCHN@sa.gov.au

Domestic and Family Violence (DFV)

Outreach Clinics for Domestic and Family Violence

DFV health clinics in domestic and family violence services and homeless shelters for people aged 16+ years.

The aim is to improve health care and provide pathways into mainstream health facilities.

For further information call Yarrow Place on 1800 817 421 (office hours)

Multi-Agency Protection Service (MAPS):

The MAPS program is an interagency approach to risk assessments related to DFV. MAPS uses a cross-agency advocacy framework to share information and support services to plan and implement interventions that reduce DFV risk and increase safety.

The MAPS team also provides consultation, advice and training to clinicians responding to consumers experiencing DFV.

For further information email: Health.MAPSTeam@sa.gov.au

Family Safety Framework (FSF):

The Family Safety Framework (FSF) supports integrated service responses to people most at risk of family violence.

For further information email:
Health.EnquiriesWomen'sSafetyStrategyWCHN@sa.gov.au

Women's Health Service (WHS)

A free and confidential health service for women who have or are experiencing domestic or family violence.

Services include:

- › DFV health care assessments and intervention
- › Sexual and reproductive health care
- › Therapeutic Counselling and groups
- › Aboriginal health programs and health checks
- › Support with DFV criminal justice or other legal processes
- › Training in DFV Health Care

For further information or to make an appointment call:
8444 0700 (office hours)

Rape and Sexual Assault

Yarrow Place Rape and Sexual Assault Service

A free and confidential service for people who have experienced a sexual assault at age 16 or over.

Services include:

- › 24 Hour crisis response for recent sexual assault:
 - support from a sexual assault social worker
 - medical care by a specialist doctor or nurse
 - the collection of forensic evidence for people who are considering legal action
- > Therapeutic counselling and advocacy
- > Therapeutic Group programs
- > Training and education in health care and forensics for sexual assault

For more information or to make an appointment call:
1800 817 421 (office hours), 8226 8787 (after hours)

www.yarrowplace.sa.gov.au

YWSWD Professional Development and Training

YWSWD trainers are trauma specialists who have extensive experience in both clinical work and training and we partner with 'lived experience consumers' in delivery of training.

Training sessions include:

- › Recognising and Responding to Disclosures of Sexual Assault
- › Ask, Assess and Respond to Domestic and Family Violence
- › Working with Vulnerable Adolescents Who Have Experienced Sexual Violence
- › Developing Trauma Awareness
- › Workplace Equity & Respect training

We can offer training that is tailored to individual staff or community groups. For more information call: Yarrow Place on 1800 817 421 or email:
info@yarrowplacesa.gov.au or www.yarrowplace.sa.gov.au