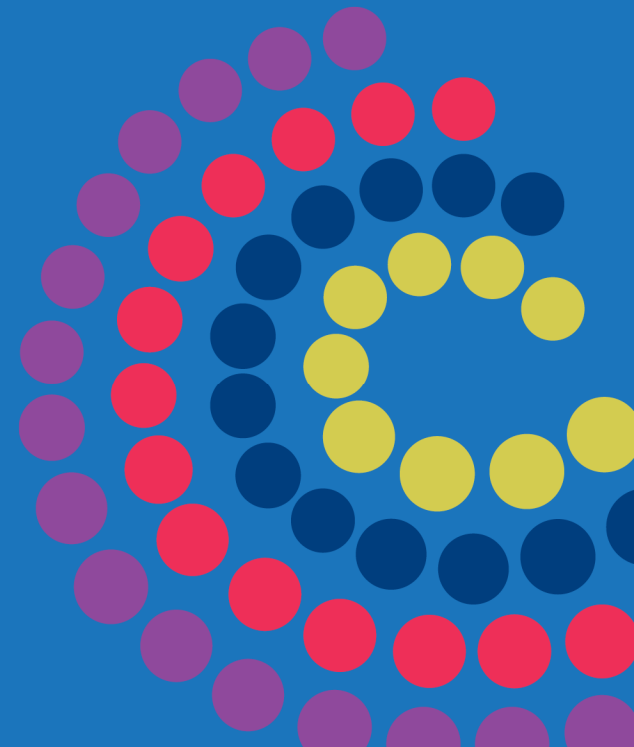


Scar Management Dermagel™

Information for Patients, parents and carers



Contact numbers

If you have any concerns about the use of Dermagel™ contact your hand therapist in Allied Health.

Therapist:

.....
.....

Telephone: (08) 8161 7381

8.30am – 4.00pm

Monday – Friday

Disclaimer

The Women’s and Children’s Hospital Allied Health Department cannot take any responsibility for misuse of these products.

For more information

Zone A
Women’s and Children’s Hospital
72 King William Rd,
North Adelaide SA 5006
Telephone (08) 8161 7000

Revised May 2020



www.ausgoal.gov.au/creative-commons



Dermagel™ is made from medical grade mineral silicon and is used to.

- > soften the scar tissue
- > help prevent skin/joint contracture
- > flatten the scar.

Dermagel™ is washable and reusable and should last for a minimum of 10 days and up to one month.

When and how to apply Dermagel™

- > Check the skin.
- > *Do not apply directly over an open wound or a rash.*

Small open areas may need to be dressed with Acticoat or an appropriate burns dressing. Seek advice from your therapist.

- > Apply to washed and dried skin
- > Slightly stretch the Dermagel™ as it is applied, sticky side down.
- > Dermagel™ needs be secured so that it stays flat and in place. Your therapist will advise on the appropriate method which may include;
 - o garments
 - o Tubigrip
 - o splint
 - o bandage
 - o Mepitac tape

Removing Dermagel™

Slowly peel the Dermagel™ from the skin.

How long should the Dermagel™ be worn?

Gradually increase the length of time the gel is worn each day and check the skin once it is removed.

- > To be effective the Dermagel™ needs to be worn for a minimum of 10 – 12 hours.

See the table below for suggested wearing times.

	Dermagel™
Day 1	2 hours
Day 2	4 hours
Day 3	8 hours /all night
Day 4	All night + 4 hours
Day 5	Day/ night up to 22 hours
Or	- hours

Hot weather

- > You may need to decrease the time the Dermagel™ is worn.
- > Your child may tolerate wearing the product at night only or day only.

Checking the skin

Skin rash/ spottiness

- > Action – Leave the Dermagel™ off until the rash settles. Once the rash has gone, reduce the wearing time to a shorter time and gradually build up wear time again. Contact your therapist for further advice.

> **Skin breakdown**

Action: Dressing as advised.

Caring for Dermagel™

- > The Dermagel™ *must* be washed each time it is taken off the skin.
- > Soap up your hands with your usual bath soap and wash over the gel surface without scrubbing it together.
- > Rinse thoroughly in clear water.
- > Pat dry with a lint free cloth.
- > Dermagel™ can then be used once patted dry.
- > Treat gently - Dermagel™ will last several weeks before needing to be replaced.