

Caring for Silipos products

- > The product *must* be washed each time it is taken off the skin.
- > Turn the tube inside out.
- > Soap up your hands with your usual bath soap and wash over the gel surface without scrubbing it together.
- > Rinse thoroughly in clear water.
- > Pat dry with a lint free cloth.
- > Air dry then apply a light dusting of talcum powder.
- > Turn tubing right side out to air dry the fabric once the gel has dried.

Contact numbers

If you have any concerns about the use of Silipos tubing contact your therapist in Allied Health.

Therapist:

.....
.....

Telephone: (08) 8161 7381

8.30am – 4.00pm

Monday – Friday

Disclaimer

The Women's and Children's Hospital Allied Health Department cannot take any responsibility for misuse of these products.

For more information

Zone A
Women's and Children's Hospital
72 King William Rd,
North Adelaide SA 5006
Telephone (08) 8161 7000

Revised May 2020



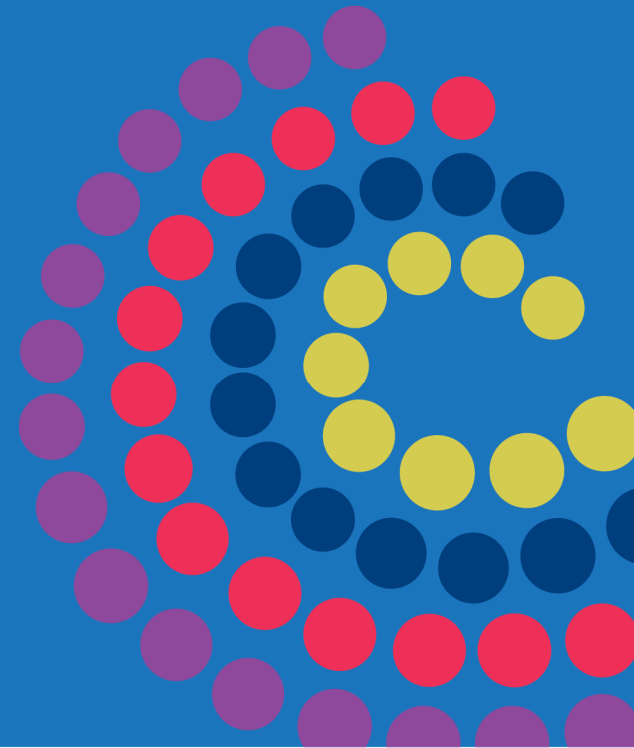
www.ausgoal.gov.au/creative-commons

© Department of Health and Wellbeing,
Government of South Australia. All rights reserved.

wch.sa.gov.au

Scar Management Silipos® Tubing

Information for patients,
parents and carers



Government of South Australia
Women's and Children's
Health Network



Women's
& Children's
Hospital

Silipos Gel tubing is a stretchable fabric coated with a polymer gel that releases a medical grade mineral oil (USP).

It is used to:

- > soften the scar tissue
- > help prevent skin/joint contracture

It is available as:

- > Digicaps (enclosed tubing for over finger tips)
- > Silipos open tubing.

When and how to apply Silipos products

Only apply to healed areas

- (Do not apply to any open wound)

Small open areas are usually dressed with Acticoat and a piece of Hypafix to hold it in place. If you have an open wound seek advice from your therapist.

- Apply the tubing to a washed and dried finger or thumb with the gel against the scar.
- Tubing should not be too tight. Signs of compromise may include:
 - fingertip appearing white, dark pink or purple
 - throbbing
 - swelling

If this occurs remove immediately

How long should the Silipos product be worn?

The amount of time that your child is able to tolerate wearing the Silipos Tubing needs to be determined. This is done by gradually increasing the length of time it is worn each day and checking the skin once it is removed.

	Silipos™
Day 1	2 hours
Day 2	4 hours
Day 3	8 hours /all night
Day 4	All night + 4 hours
Day 5	Day/ night up to 22 hours
Or	- hours

- > To be effective the product needs to be worn for a minimum of 10 – 12 hours.
- > Contact your physiotherapist / occupational therapist if your child can not tolerate more than 10 hours.

Hot weather

- > You may need to decrease the time the Silipos tube is worn.
- > Your child may tolerate wearing the product at night only or day only.

Checking the skin

Check the skin daily for the following;

> **Skin rash/ spottiness**

Action – Leave the Gel off until the rash settles. Once the rash has gone, reduce the wearing time to a shorter time and gradually build up wear time again. Contact your therapist for further advice.

> **Skin breakdown**

Action: Dressing as prescribed.

> **Skin infection** (skin will appear as pimply spots)

Action: Leave the Silipos tube off and contact your therapist.